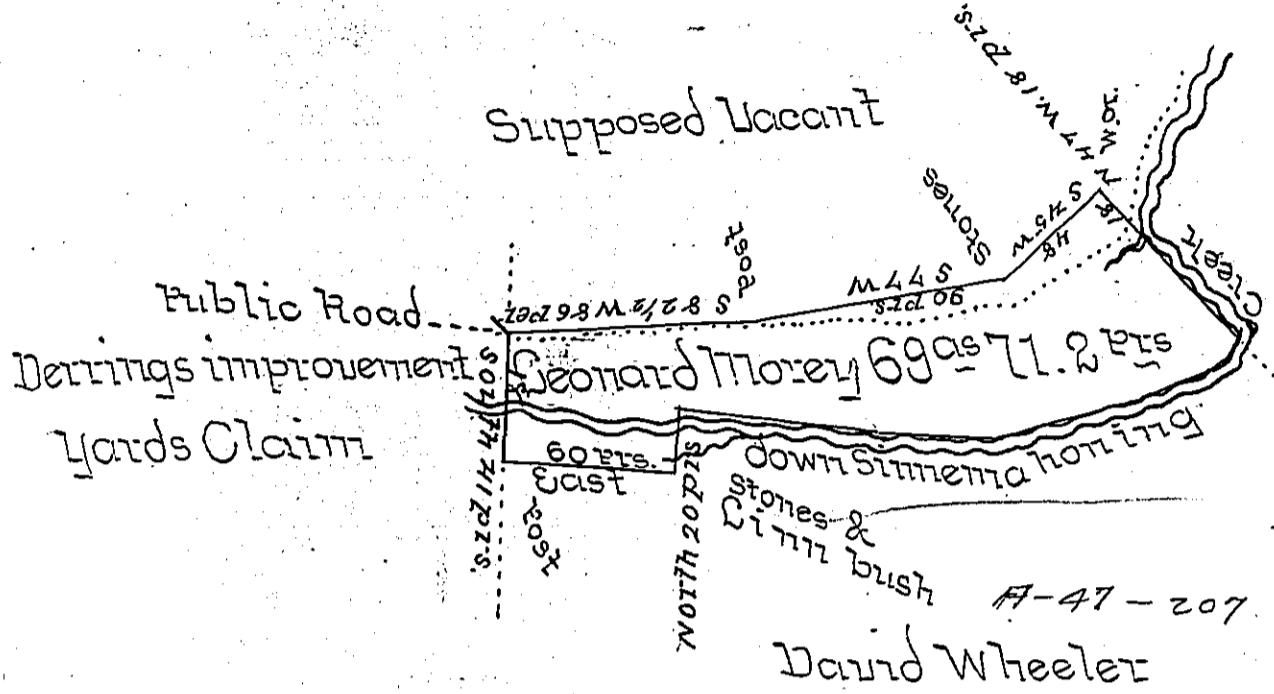


Cou. & Dis<sup>n</sup> down Creek

S	87	8.75	pts
N	87	8.39	pts
N	72	8.63	pts
N	59	8.21	pts
N	37	8.8	pts
N	5	W. 4 1/2	pts
N	47	W. 50	pts
			261 pts



Situate on Bennets Branch of the Simema honing Creek in Gibson Township Clearfield County surveyed on the 25<sup>th</sup> July 1839 for Leonard Morey by virtue of his warrant bearing date the 29<sup>th</sup> May 1839 containing sixty nine acres seventy one pts & two obl. of a perch and the usual allowance of six per cent for Roads &c. Improvement said to Commence on the 1<sup>st</sup> April 1813 =

Moses Boogs U.S.

To Jacob Sallade Esq<sup>r</sup> S.G.

IN TESTIMONY that the above is a copy of the original remaining on file in the Department of Internal Affairs of Pennsylvania, made conformably to an Act of Assembly approved the 16th day of February, 1833, I have hereunto set my Hand and caused the Seal of said Department to be affixed at Harrisburg, this seventh day of February 1899.



*James H. Pette*  
Secretary of Internal Affairs